

Cello/Bass

TEACHING RHYTHMIC INDEPENDENCE

A BOOK OF RHYTHMS AND PROGRESSIVE
MELODIES

FOR STRINGS

Book 1

BY

BOYD E. GIBSON

Apex Music Company

TEACHING RHYTHMIC INDEPENDENCE

A BOOK OF RHYTHMS AND PROGRESSIVE
MELODIES

FOR STRINGS

Book 1

BY

BOYD E. GIBSON

ISBN [0-9773901-5-2](#)

Apex Music Company

2010 NC Highway 55
Durham NC 27707

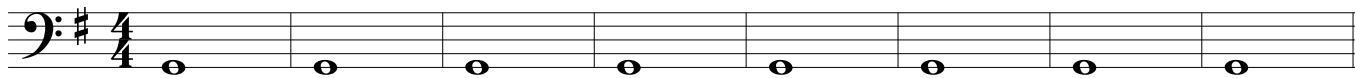
Copyright © 2012 by Apex Music Company All Rights Reserved

Contents

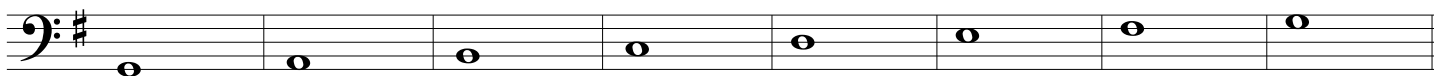
Whole Note Exercise

Flash Card No.1

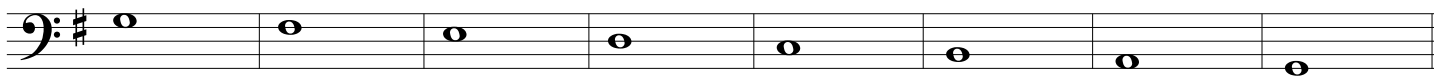
①



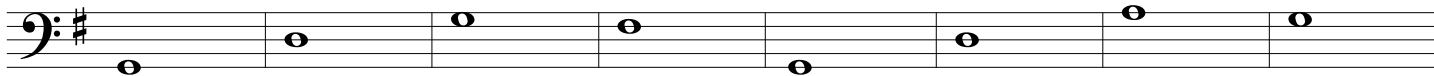
②



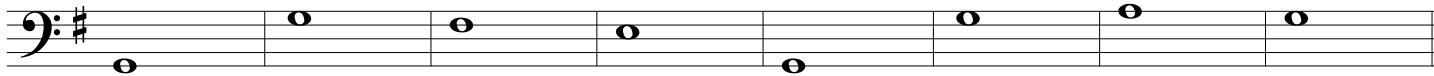
③



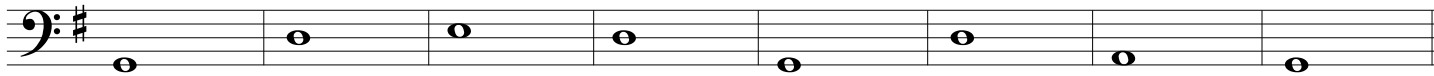
④



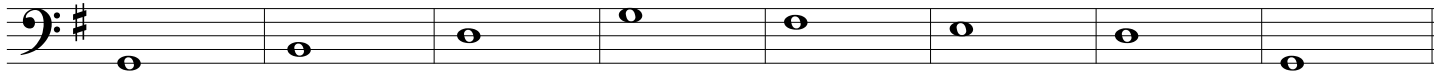
⑤



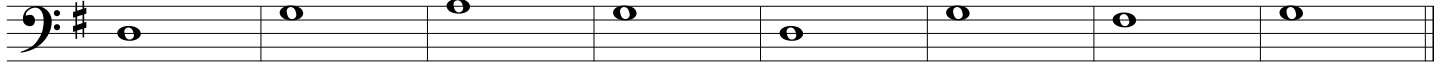
⑥



⑦



⑧



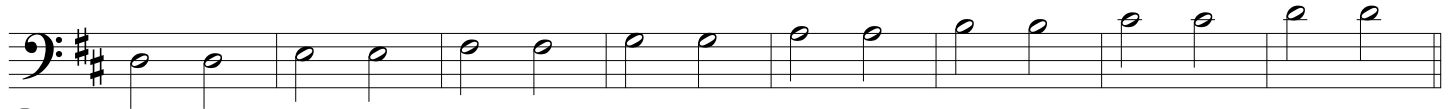
Half Notes

Flash Card 2

9



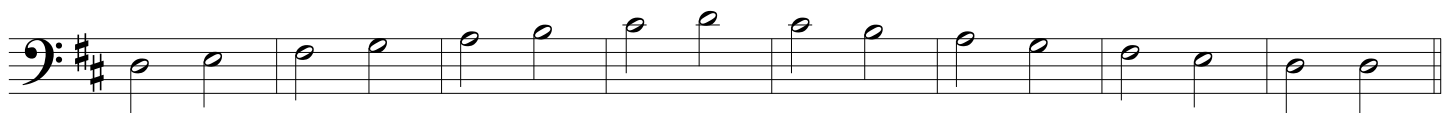
10



11



12



13



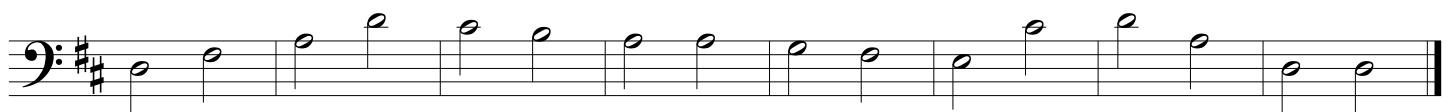
14



15



16



Half Notes & Half Note Rests

Flash Card 3

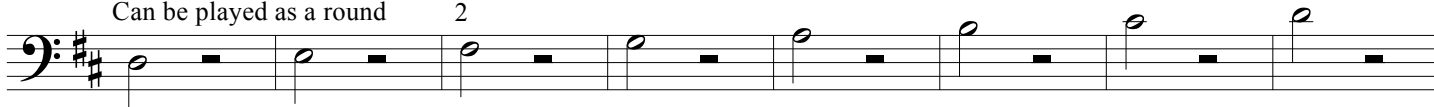
17

Can be played in an Ensemble with Half Notes & Half Note Rests II Page 4

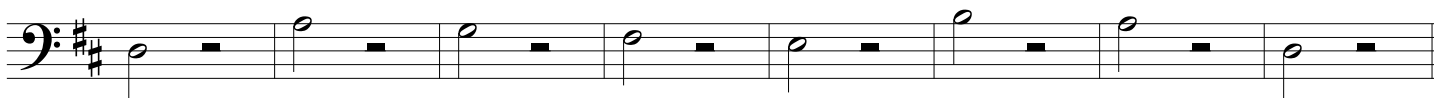


18

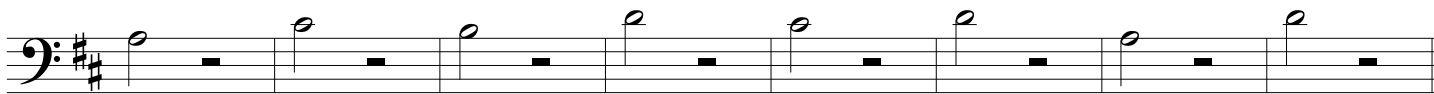
Can be played as a round 2



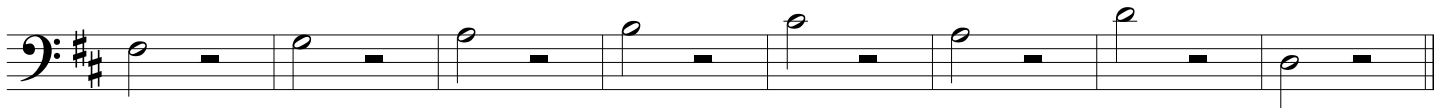
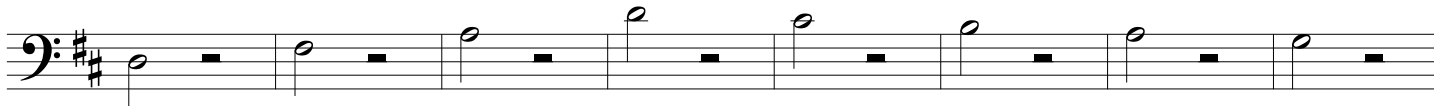
19



20



21



Half Notes & Half Note Rests II

Flash Card 4

22

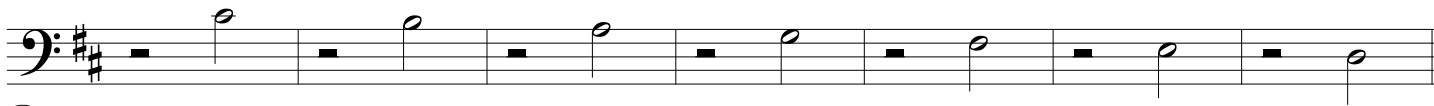
Can be played in an Ensemble with Half Notes & Half Note Rests Page 3



23

Can be played as a round

2



24



25



26



Quarter Note Rest on 2 & 4

Flash Card 12

35

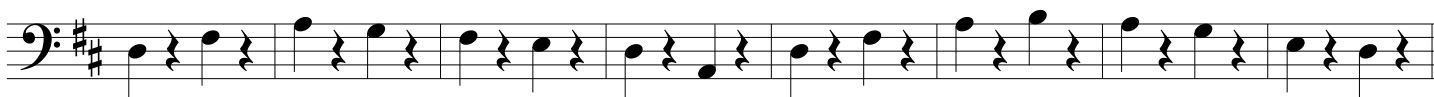
Can be played in ensemble with Rest on 1 & 3 Page 7



36



37



38

Twinkle Twinkle Little Star



39



40



Quarter Note Rest on 1 & 3

Flash Card 11

41

Can be played in ensemble with Rest on 2 & 4 Page 6



Quarter Note Rest on Beat 1

Flash Card 9

47



48



49



50



51



52



53



54



Quarter Note Rest on Beat 2

Flash Card 8

55



Quarter Note Rest on Beat 4

Flash Card 10

63



64



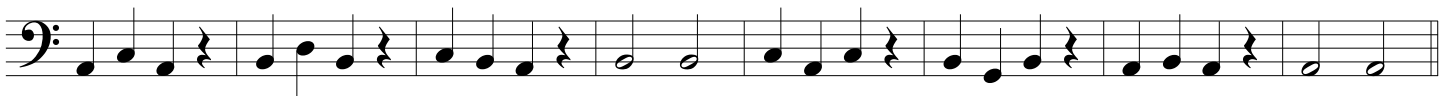
65



66



67



68



69



70



Half, Quarter Notes & Quarter Rest

In Rounds
Flash Card 2 & 7

71



72



73



74



Half and Quarter Notes in Rounds

Includes O How Lovely is the Evening

Flash Card 48, 49, & 50

75



76



77



78

O How Lovely is the Evening



8th, Quarter, & Half Note Rhythms

Flash Card 2, 6 & 13

79



80



81



82



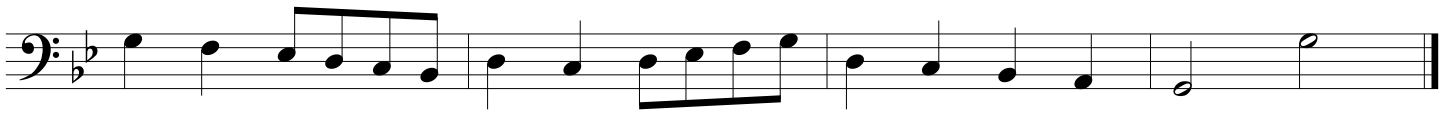
83



84



85



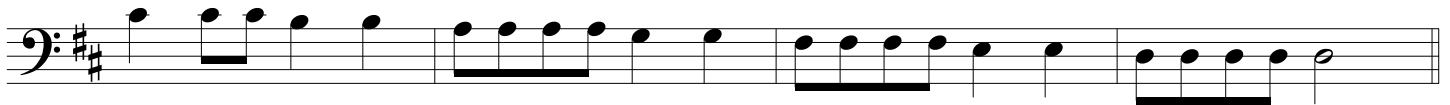
Quarter & 8th Notes in Rounds

Flash Cards 13, 14 & 37

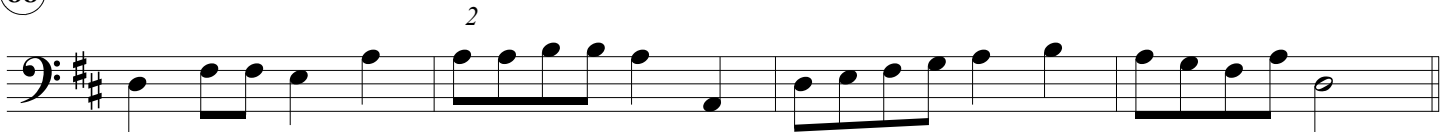
86



87



88



89



Dotted Half, Quarter and Eight Notes

Flash Card 49, 50 & 51

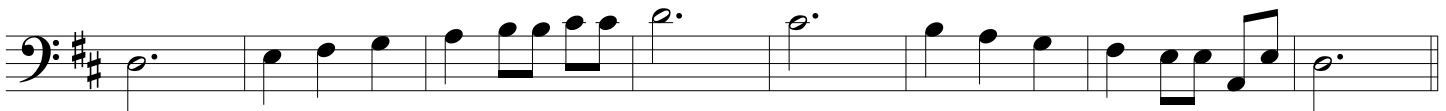
90



91



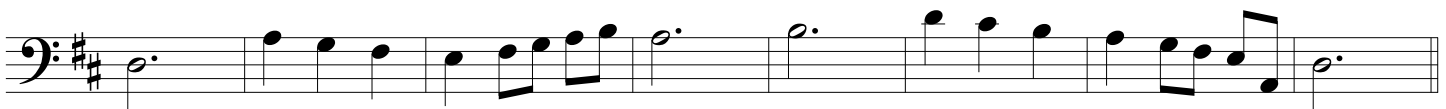
92



93



94



95



96



Dotted Half Quarter and Eight Notes

Flash Card 49, 50 & 52

97



98



99





100



101

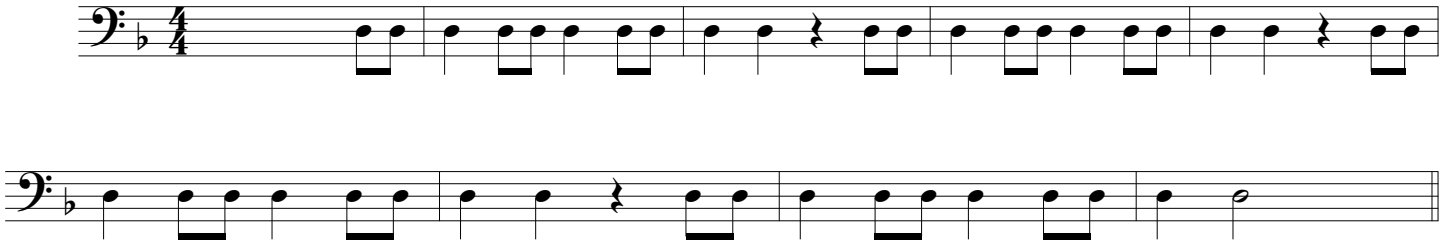


Half, Quarter & 8th Note Exercise

Flash Card 15, 16, & 17

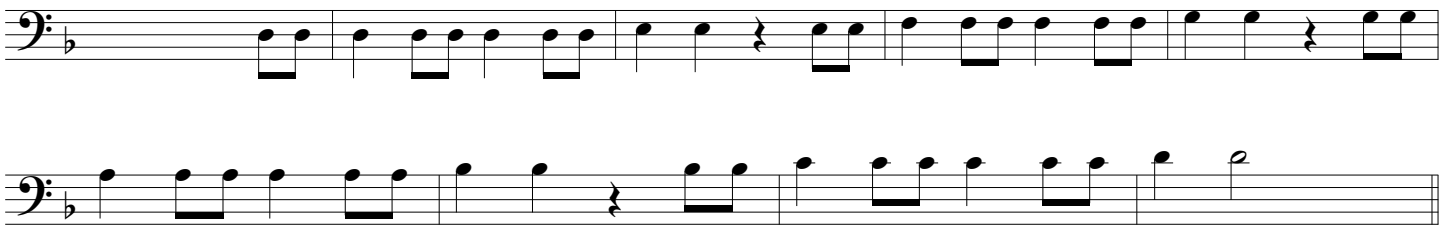
Mozart's Symphony No. 40

102



Musical notation for exercise 102, featuring a bass clef, a key signature of one flat (Bb), and a 4/4 time signature. The exercise consists of two staves of music. The first staff contains four measures of music, and the second staff contains four measures of music, ending with a double bar line.

103



Musical notation for exercise 103, featuring a bass clef, a key signature of one flat (Bb), and a 4/4 time signature. The exercise consists of two staves of music. The first staff contains four measures of music, and the second staff contains four measures of music, ending with a double bar line.

104



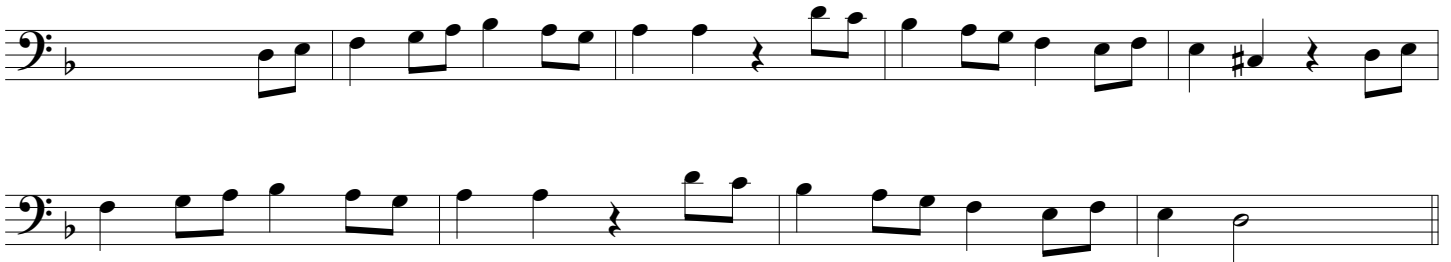
Musical notation for exercise 104, featuring a bass clef, a key signature of one flat (Bb), and a 4/4 time signature. The exercise consists of one staff of music containing four measures, ending with a double bar line.

105



Musical notation for exercise 105, featuring a bass clef, a key signature of one flat (Bb), and a 4/4 time signature. The exercise consists of one staff of music containing four measures, ending with a double bar line.

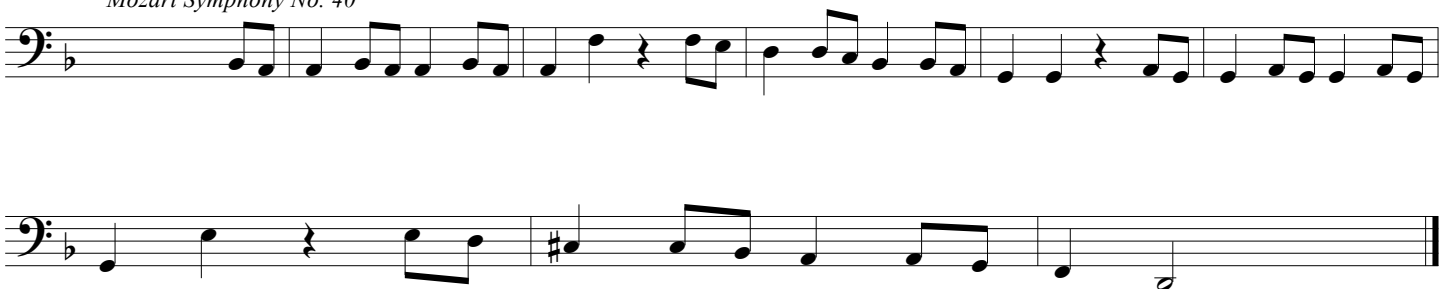
106



Musical notation for exercise 106, featuring a bass clef, a key signature of one flat (Bb), and a 4/4 time signature. The exercise consists of two staves of music. The first staff contains four measures of music, and the second staff contains four measures of music, ending with a double bar line.

107

Mozart Symphony No. 40



Musical notation for exercise 107, featuring a bass clef, a key signature of one flat (Bb), and a 4/4 time signature. The exercise consists of two staves of music. The first staff contains four measures of music, and the second staff contains four measures of music, ending with a double bar line.

Half, Quarter, Dotted Quarter & 8th Notes

Flash Card 6, 18, 19 & 20

Ode To Joy

108



109



110



111



112



Dotted Quarter Note Rhythm

Flash Card 5 & 21

118



119



120



121



122



123



124



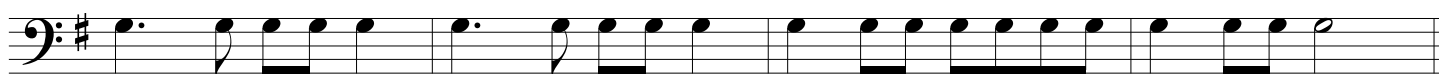
135



136



137



138



139



140



141



142

Haydn String Quartet "Emperor"





Dotted Half and Eight Notes

Flash 2, 28 & 29

143



Musical notation for exercise 143, featuring a bass clef and 4/4 time signature. The exercise consists of a single staff with a sequence of eighth notes and dotted half notes.

144



Musical notation for exercise 144, featuring a bass clef. The exercise consists of a single staff with a sequence of eighth notes and dotted half notes.

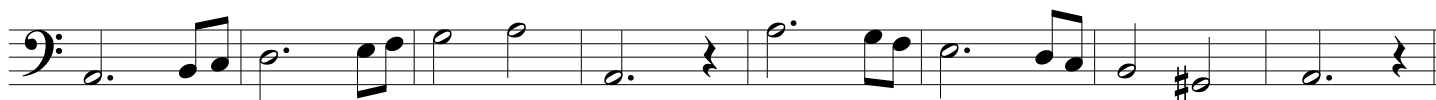


Musical notation for exercise 144, featuring a bass clef. The exercise consists of a single staff with a sequence of eighth notes and dotted half notes.

145

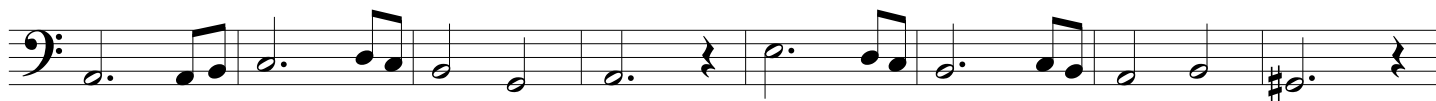


Musical notation for exercise 145, featuring a bass clef. The exercise consists of a single staff with a sequence of eighth notes, dotted half notes, and a sharp sign.



Musical notation for exercise 145, featuring a bass clef. The exercise consists of a single staff with a sequence of eighth notes, dotted half notes, and a sharp sign.

146



Musical notation for exercise 146, featuring a bass clef. The exercise consists of a single staff with a sequence of eighth notes, dotted half notes, and a sharp sign.



Musical notation for exercise 146, featuring a bass clef. The exercise consists of a single staff with a sequence of eighth notes, dotted half notes, and a sharp sign.

147



Musical notation for exercise 147, featuring a bass clef. The exercise consists of a single staff with a sequence of eighth notes, dotted half notes, and a sharp sign.



Musical notation for exercise 147, featuring a bass clef. The exercise consists of a single staff with a sequence of eighth notes, dotted half notes, and a sharp sign.

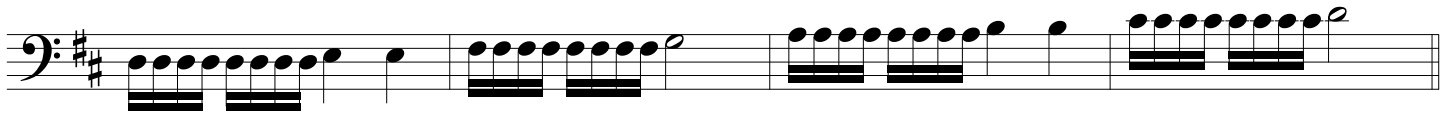
Half, Quarter & 16th Notes

Flash Card 30 & 31

148



149



150



151



152



153



154



8th and 16th Notes

Flash Card 32

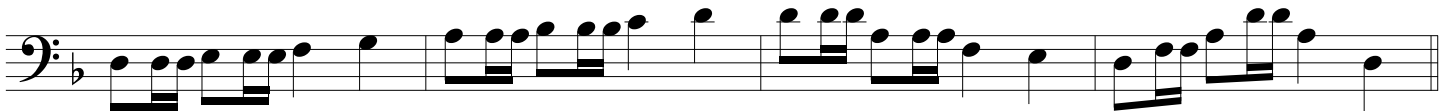
155



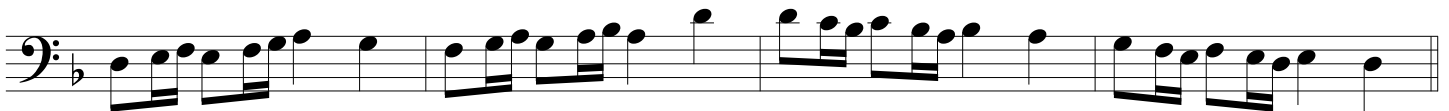
156



157



158



159



160



161



Quarter, 8th & 16th Notes Mixed I

Flash Card 33

162



163



164



165



166



167



Dotted Half, 8th and 16th Notes

Flash Card 29, 33, 36 & 38

Rhythm for Vivaldi's Gloria

175



176



177



178



179

Antonio Vivaldi's Gloria



Dotted 8th & 16th Notes

Flash Card 5 & 39

180



181



182



183



184



185



186



Dotted Quarter and 16th Note Rhythm

Flash Card 6, 29 & 41

195



196



197



198



199



200



201



Triplets and Quarter Notes

Flash Card 5 & 42

202

First line of musical notation for exercise 202. It features a bass clef, a key signature of two sharps (F# and C#), and a 4/4 time signature. The staff contains four measures of music, each consisting of a triplet of quarter notes followed by a quarter note. The notes are G2, A2, B2, C3, D3, E3, F3, G3.

Second line of musical notation for exercise 202. It continues the pattern from the first line, with four measures of triplet quarter notes followed by quarter notes. The notes are G3, A3, B3, C4, D4, E4, F4, G4.

203

First line of musical notation for exercise 203. It features a bass clef, a key signature of two sharps, and a 4/4 time signature. The staff contains four measures of music, each consisting of a triplet of quarter notes followed by a quarter note. The notes are G3, A3, B3, C4, D4, E4, F4, G4.

Second line of musical notation for exercise 203. It continues the pattern from the first line, with four measures of triplet quarter notes followed by quarter notes. The notes are G4, A4, B4, C5, D5, E5, F5, G5.

204

First line of musical notation for exercise 204. It features a bass clef, a key signature of two sharps, and a 4/4 time signature. The staff contains four measures of music, each consisting of a triplet of quarter notes followed by a quarter note. The notes are G3, A3, B3, C4, D4, E4, F4, G4.

Second line of musical notation for exercise 204. It continues the pattern from the first line, with four measures of triplet quarter notes followed by quarter notes. The notes are G4, A4, B4, C5, D5, E5, F5, G5.

205

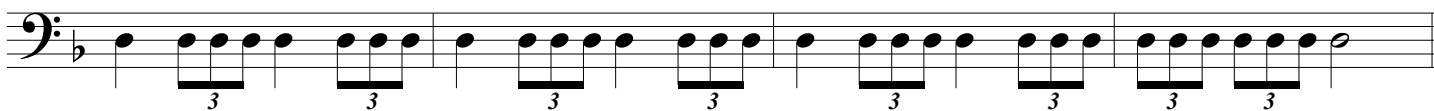
First line of musical notation for exercise 205. It features a bass clef, a key signature of two sharps, and a 4/4 time signature. The staff contains four measures of music, each consisting of a triplet of quarter notes followed by a quarter note. The notes are G3, A3, B3, C4, D4, E4, F4, G4.

Second line of musical notation for exercise 205. It continues the pattern from the first line, with four measures of triplet quarter notes followed by quarter notes. The notes are G4, A4, B4, C5, D5, E5, F5, G5.

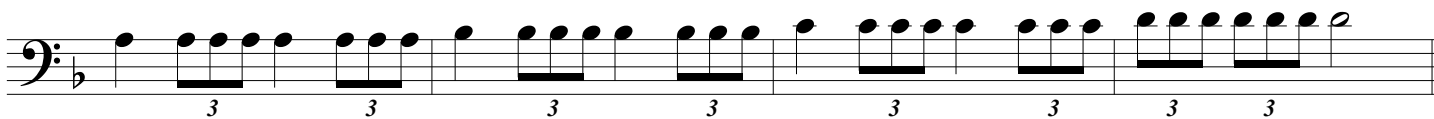
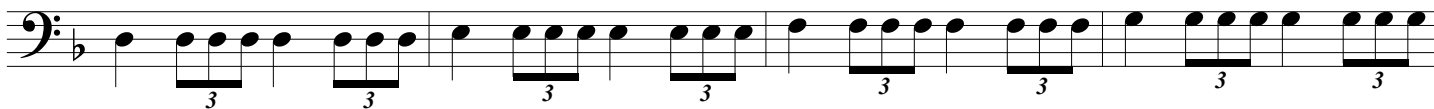
Triplets and Quarter Notes II

Flash Card 43 & 44

206



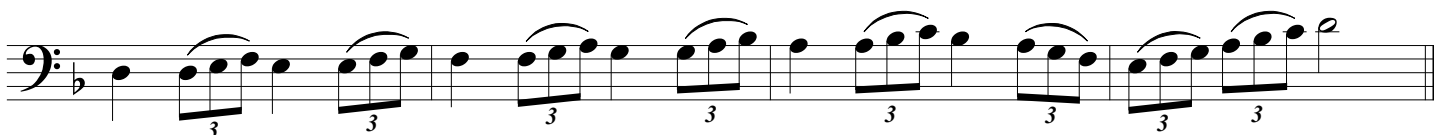
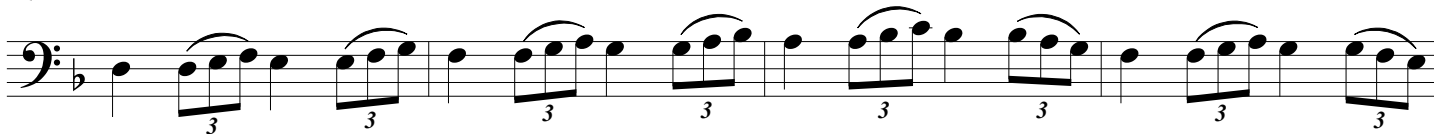
207



208



209



Syncopation

Flash Card 2 & 45

210



211



212



213



214



215



216



217



Syncopation II

Flash Card 2 & 46

218

Musical staff for exercise 218, bass clef, 4/4 time signature. The melody consists of quarter notes: G2, A2, B2, C3, D3, E3, F3, G3. The last two measures contain half notes G3 and F3.

219

Musical staff for exercise 219, bass clef, 4/4 time signature. The melody consists of quarter notes: G2, A2, B2, C3, D3, E3, F3, G3. The last two measures contain half notes G3 and F3.

220

Musical staff for exercise 220, bass clef, 4/4 time signature. The melody consists of quarter notes: G2, A2, B2, C3, D3, E3, F3, G3. The last two measures contain half notes G3 and F3.

221

Musical staff for exercise 221, bass clef, 4/4 time signature. The melody consists of quarter notes: G2, A2, B2, C3, D3, E3, F3, G3. The last two measures contain half notes G3 and F3.

222

Musical staff for exercise 222, bass clef, 4/4 time signature. The melody consists of quarter notes: G2, A2, B2, C3, D3, E3, F3, G3. The last two measures contain half notes G3 and F3.

223

Musical staff for exercise 223, bass clef, 4/4 time signature. The melody consists of quarter notes: G2, A2, B2, C3, D3, E3, F3, G3. The last two measures contain half notes G3 and F3.

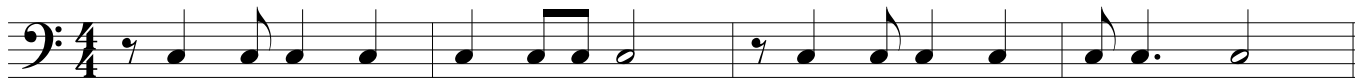
224

Musical staff for exercise 224, bass clef, 4/4 time signature. The melody consists of quarter notes: G2, A2, B2, C3, D3, E3, F3, G3. The last two measures contain half notes G3 and F3.

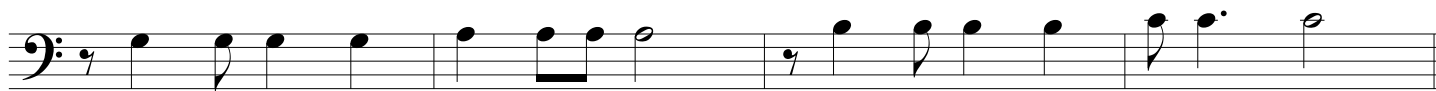
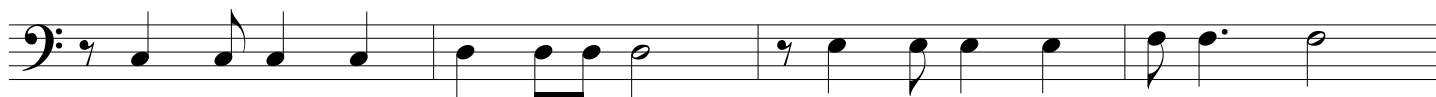
Syncopation III

Flash Card 24, 47 & 93

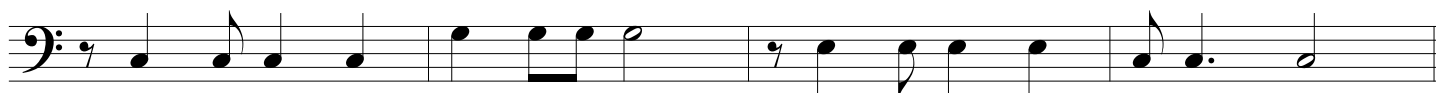
225



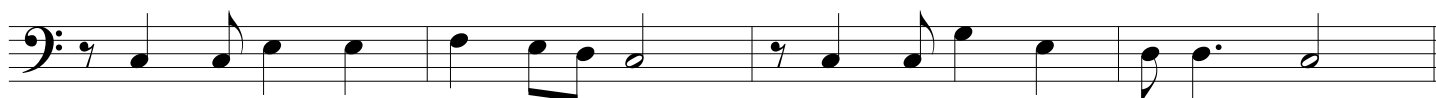
226



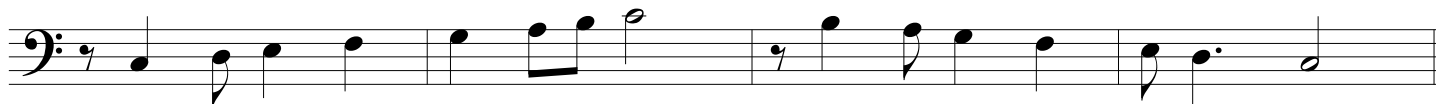
227



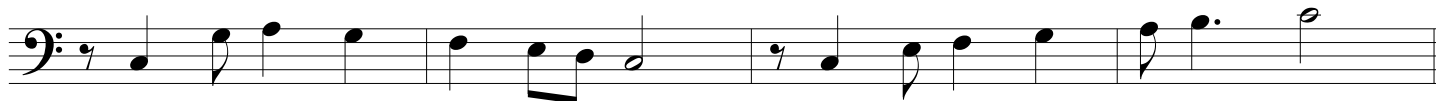
228



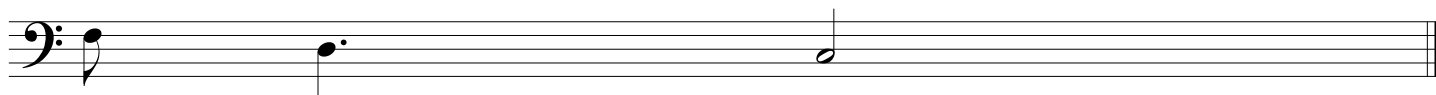
229



230



231



Counting in 2 Part I

Flash Card 59 & 60

232

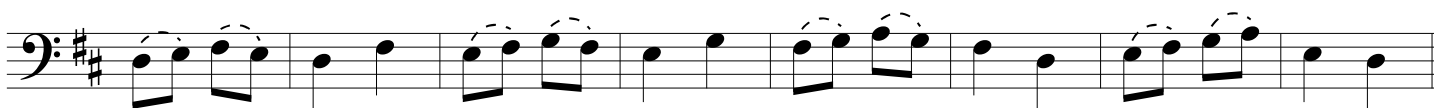
Can be played with Counting in 2 Cut Time Part 1 at the same time Page 42.



233



234



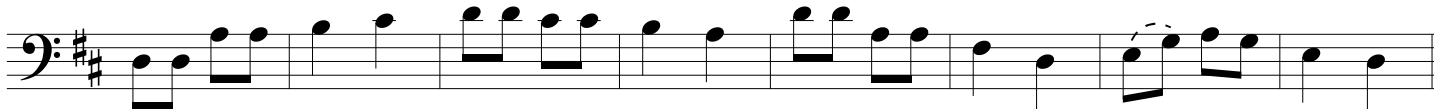
235



236



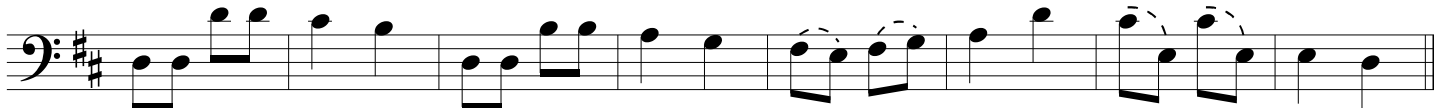
237



238



239

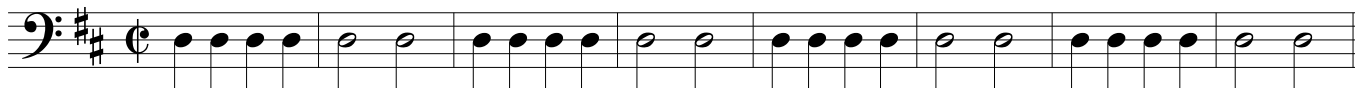


Counting in 2 Cut Time Part I

Flash Card 53 & 54

(240)

Can be played with Counting in 2 Part 1 at the same time Page 41.



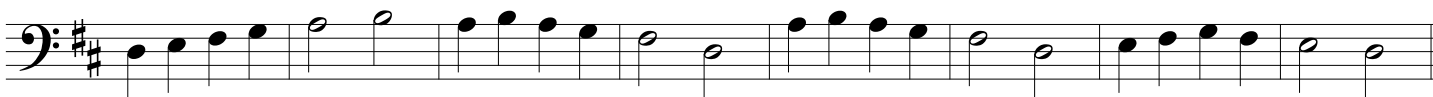
(241)



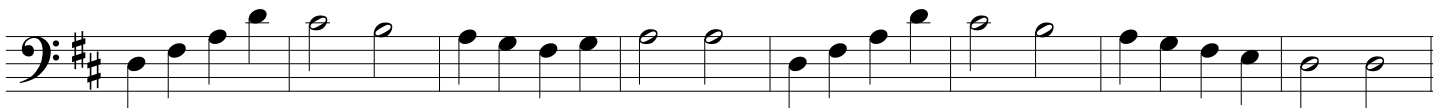
(242)



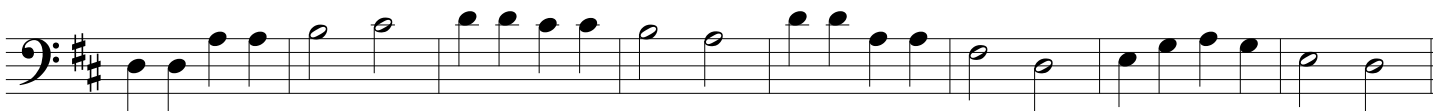
(243)



(244)



(245)



(246)



(247)



Counting in 2 Part II

Flash Card 59 & 63

248

Can be played with Counting in 2 Cut Time Part II at the same time Page 44.



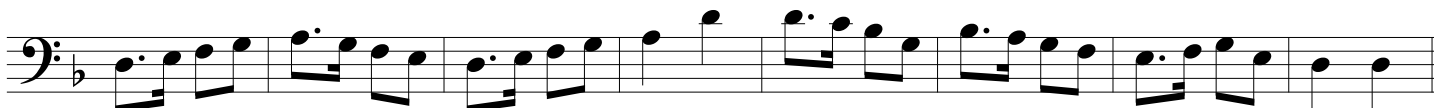
249



250



251



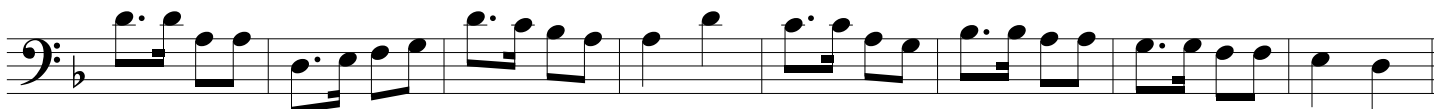
252



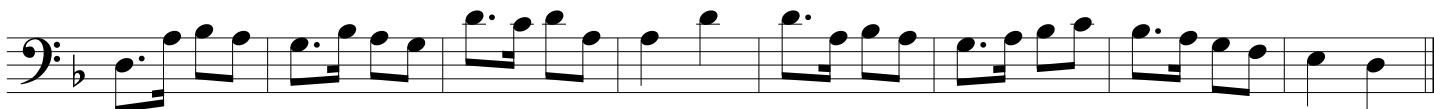
253



254



255



Counting in 2 Cut Time II

Flash Card 53 & 57

256

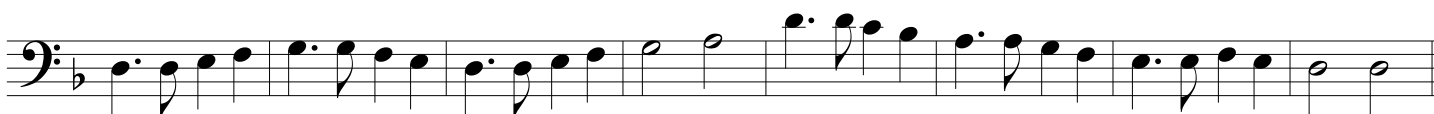
Can be played with Counting in 2 Part II at the same time Page 43.



257



258



259



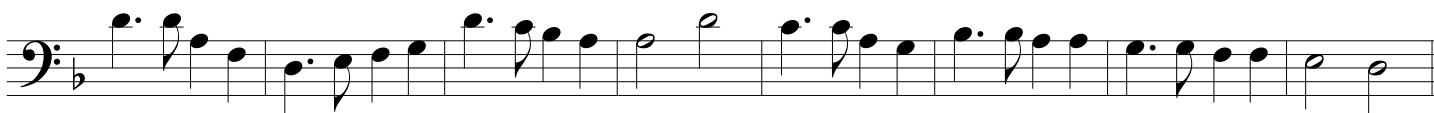
260



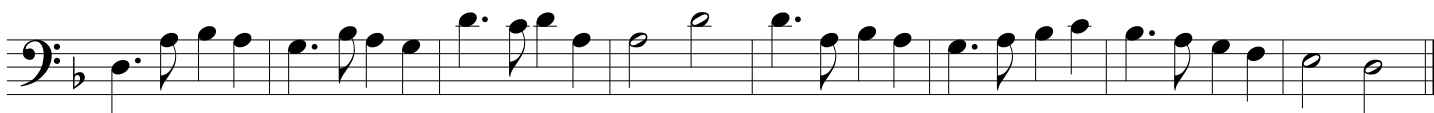
261



262



263



Counting in 2 Part III

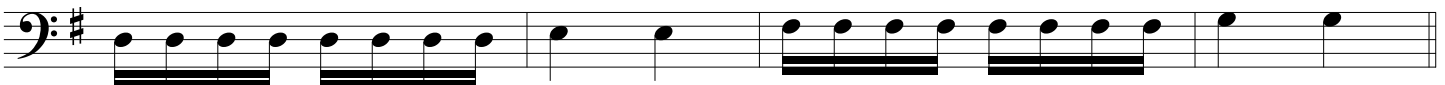
Flash Card 59 & 61

264

Can be played with Counting in 2 Cut Time Part III Page 47



265



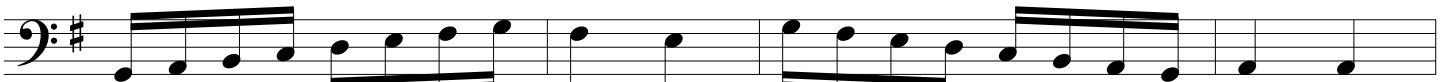
266



267



268

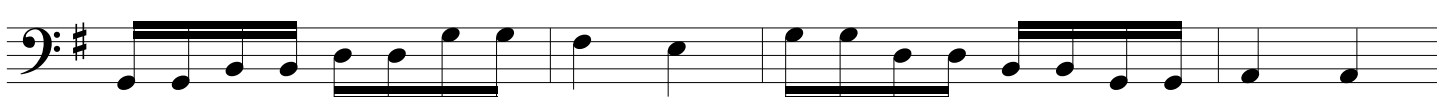




269



270



271

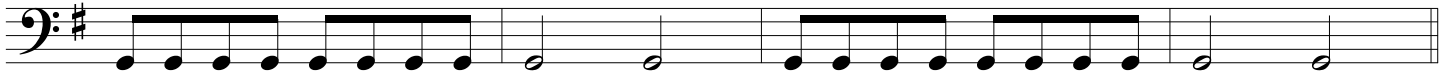


Counting in 2 Cut Time Part III

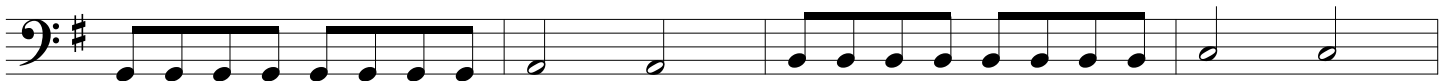
Flash Card 53 & 55

272

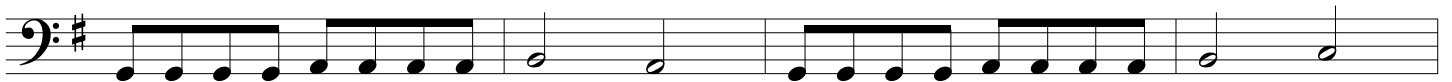
Can be played with Counting in 2 Part III Page 47



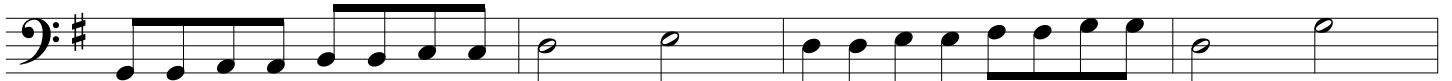
273



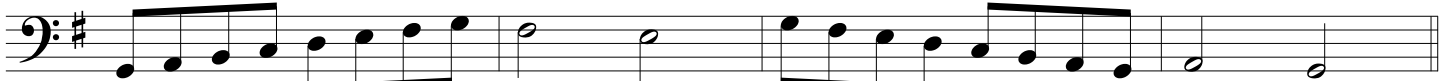
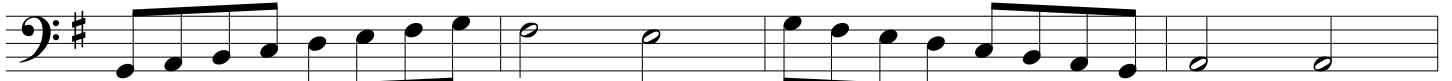
274



275



276



277

Exercise 277: Two staves of music in bass clef, key signature of one sharp (F#). The first staff contains four measures of music, and the second staff contains four measures. The melody in the first staff consists of eighth-note runs and quarter notes, while the second staff provides a harmonic accompaniment with quarter and half notes.

278

Exercise 278: Two staves of music in bass clef, key signature of one sharp (F#). The first staff contains four measures of music, and the second staff contains four measures. The melody in the first staff consists of eighth-note runs and quarter notes, while the second staff provides a harmonic accompaniment with quarter and half notes.

279

Exercise 279: Two staves of music in bass clef, key signature of one sharp (F#). The first staff contains four measures of music, and the second staff contains four measures. The melody in the first staff consists of eighth-note runs and quarter notes, while the second staff provides a harmonic accompaniment with quarter and half notes.

Dotted Quarter, 8th & 16th Notes

Flash Card 65, 66 & 67

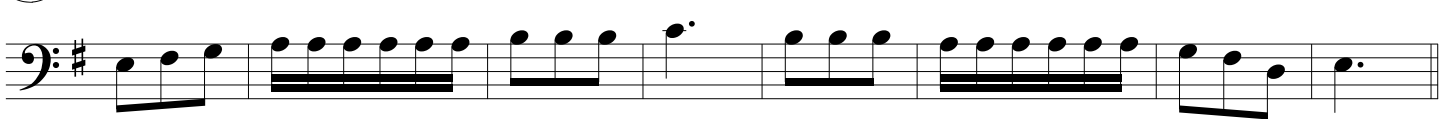
280



281



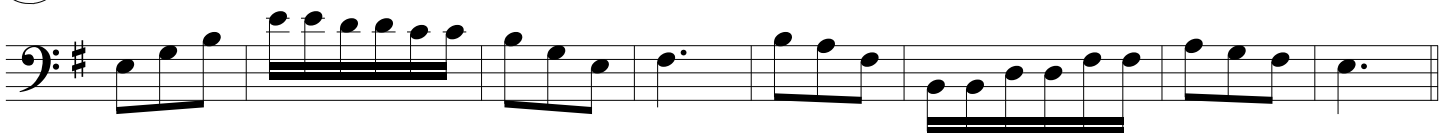
282



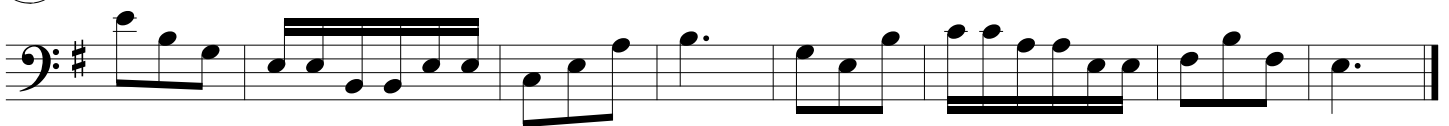
283



284



285



Dotted Quarter, 8th, 16th & 16th Triplets

Flash Card 65, 67, 68 & 69

286

Exercise 286: Bass clef, key signature of one sharp (F#), 3/8 time signature. The exercise consists of two measures. The first measure contains a dotted quarter note (F#), followed by an eighth note (G), and then a triplet of eighth notes (A, B, C). The second measure contains a dotted quarter note (D), followed by an eighth note (E), and then a triplet of eighth notes (F, G, A).

287

Exercise 287: Bass clef, key signature of one sharp (F#), 3/8 time signature. The exercise consists of two measures. The first measure contains a dotted quarter note (F#), followed by an eighth note (G), and then a triplet of eighth notes (A, B, C). The second measure contains a dotted quarter note (D), followed by an eighth note (E), and then a triplet of eighth notes (F, G, A).

288

Exercise 288: Bass clef, key signature of one sharp (F#), 3/8 time signature. The exercise consists of two measures. The first measure contains a dotted quarter note (F#), followed by an eighth note (G), and then a triplet of eighth notes (A, B, C). The second measure contains a dotted quarter note (D), followed by an eighth note (E), and then a triplet of eighth notes (F, G, A).

289

Exercise 289: Bass clef, key signature of one sharp (F#), 3/8 time signature. The exercise consists of two measures. The first measure contains a dotted quarter note (F#), followed by an eighth note (G), and then a triplet of eighth notes (A, B, C). The second measure contains a dotted quarter note (D), followed by an eighth note (E), and then a triplet of eighth notes (F, G, A).

290

Exercise 290: Bass clef, key signature of one sharp (F#), 3/8 time signature. The exercise consists of two measures. The first measure contains a dotted quarter note (F#), followed by an eighth note (G), and then a triplet of eighth notes (A, B, C). The second measure contains a dotted quarter note (D), followed by an eighth note (E), and then a triplet of eighth notes (F, G, A).

291

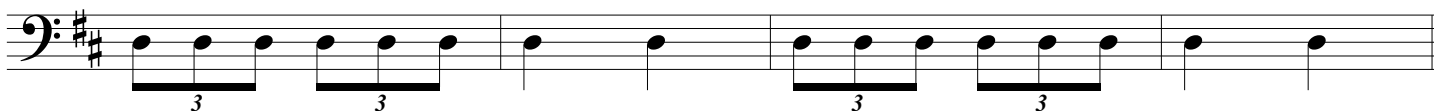
Exercise 291: Bass clef, key signature of one sharp (F#), 3/8 time signature. The exercise consists of two measures. The first measure contains a dotted quarter note (F#), followed by an eighth note (G), and then a triplet of eighth notes (A, B, C). The second measure contains a dotted quarter note (D), followed by an eighth note (E), and then a triplet of eighth notes (F, G, A).

Triplets in 2

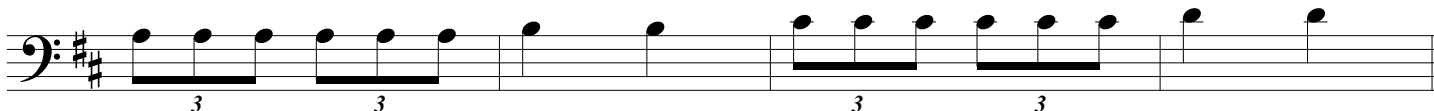
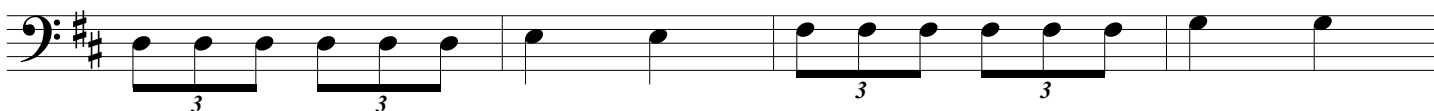
Flash Card 83 & 94

292

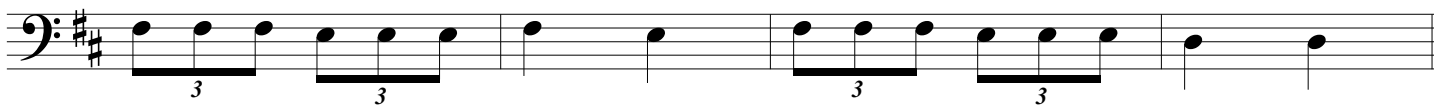
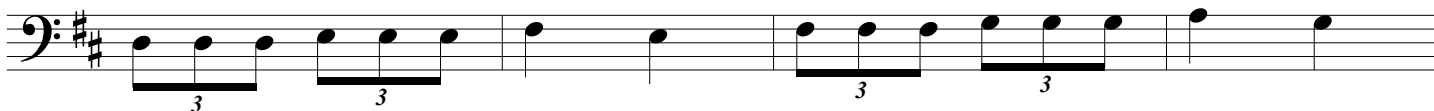
Can be played with Compound Meter in 2 Page 53



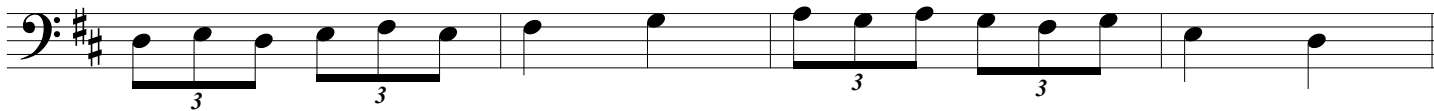
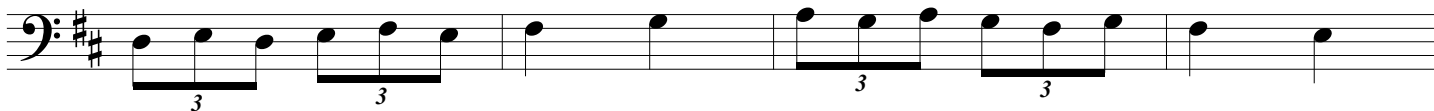
293



294



295



296

Exercise 296 consists of two staves of music in bass clef with a key signature of two sharps (F# and C#). The first staff contains four measures: the first two measures feature triplets of eighth notes, and the last two measures feature single eighth notes. The second staff also contains four measures: the first two measures feature triplets of eighth notes, and the last two measures feature single eighth notes.

297

Exercise 297 consists of two staves of music in bass clef with a key signature of two sharps (F# and C#). The first staff contains four measures: the first two measures feature triplets of eighth notes, and the last two measures feature single eighth notes. The second staff also contains four measures: the first two measures feature triplets of eighth notes, and the last two measures feature single eighth notes.

298

Exercise 298 consists of two staves of music in bass clef with a key signature of two sharps (F# and C#). The first staff contains four measures: the first two measures feature triplets of eighth notes, and the last two measures feature single eighth notes. The second staff also contains four measures: the first two measures feature triplets of eighth notes, and the last two measures feature single eighth notes.

Compound Meter in 2

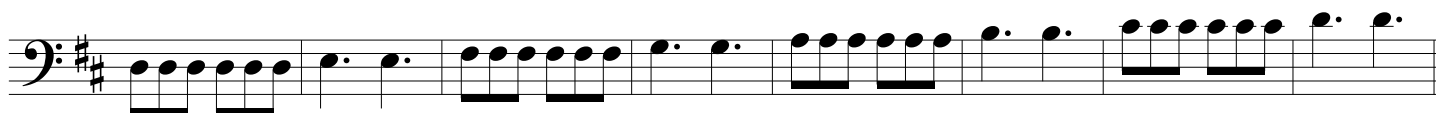
Flash Cards 71 & 72

299

Can be played with Triplets in 2 Page 51



300



301



302



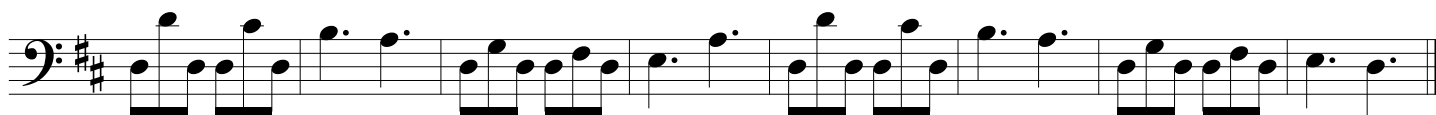
303



304



305

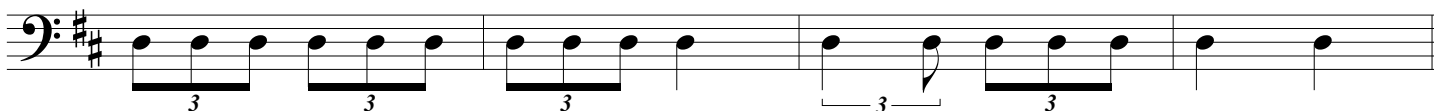


Counting in 2

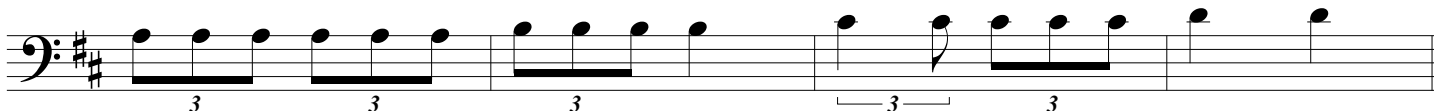
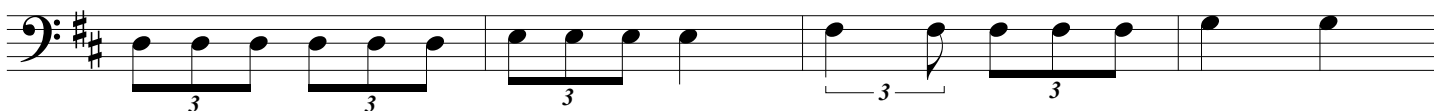
Flash Card 90, 94, 95 & 96

306

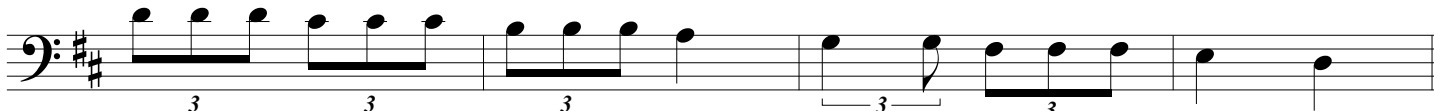
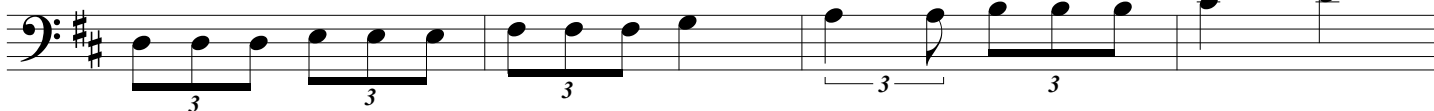
Can be played with Compound Meter in 2 Page 56



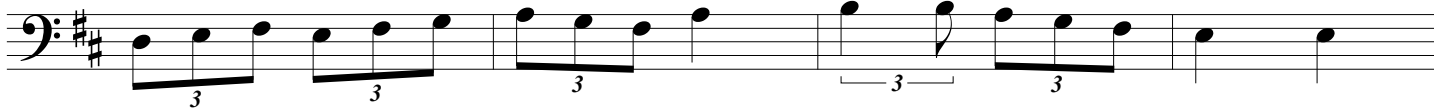
307



308



309



310

310

311 Emerald Gates

311 Emerald Gates

312

312

Compound Meter in 2

Flash Card 71, 72 & 97

313

Can be played with Counting in 2 Page 54



314



315



316



317

Exercise 317 consists of two staves of music in bass clef, D major (two sharps). The first staff contains four measures: a quarter note D4, quarter note E4, quarter note F#4, quarter note G4; a quarter note A4, quarter note B4, quarter note C5, quarter note D5; a quarter note D5, quarter note C5, quarter note B4, quarter note A4; and a quarter note G4, quarter note F#4, quarter note E4, quarter note D4. The second staff contains four measures: a quarter note D4, quarter note E4, quarter note F#4, quarter note G4; a quarter note A4, quarter note B4, quarter note C5, quarter note D5; a quarter note D5, quarter note C5, quarter note B4, quarter note A4; and a quarter note G4, quarter note F#4, quarter note E4, quarter note D4.

318

Emerald Gates

Exercise 318, titled "Emerald Gates", consists of two staves of music in bass clef, D major (two sharps). The first staff contains four measures: a quarter note D4, quarter note E4, quarter note F#4, quarter note G4; a quarter note A4, quarter note B4, quarter note C5, quarter note D5; a quarter note D5, quarter note C5, quarter note B4, quarter note A4; and a quarter note G4, quarter note F#4, quarter note E4, quarter note D4. The second staff contains four measures: a quarter note D4, quarter note E4, quarter note F#4, quarter note G4; a quarter note A4, quarter note B4, quarter note C5, quarter note D5; a quarter note D5, quarter note C5, quarter note B4, quarter note A4; and a quarter note G4, quarter note F#4, quarter note E4, quarter note D4.

319

Exercise 319 consists of two staves of music in bass clef, D major (two sharps). The first staff contains four measures: a quarter note D4, quarter note E4, quarter note F#4, quarter note G4; a quarter note A4, quarter note B4, quarter note C5, quarter note D5; a quarter note D5, quarter note C5, quarter note B4, quarter note A4; and a quarter note G4, quarter note F#4, quarter note E4, quarter note D4. The second staff contains four measures: a quarter note D4, quarter note E4, quarter note F#4, quarter note G4; a quarter note A4, quarter note B4, quarter note C5, quarter note D5; a quarter note D5, quarter note C5, quarter note B4, quarter note A4; and a quarter note G4, quarter note F#4, quarter note E4, quarter note D4.

Counting in 2

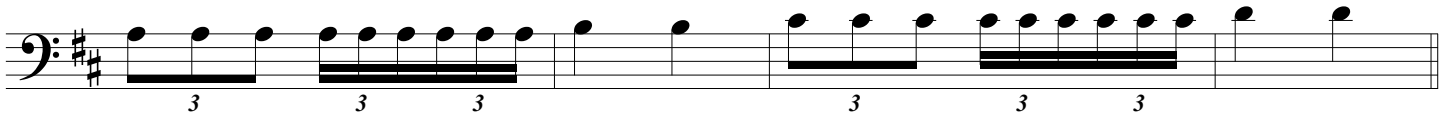
Flash Card 89 & 90

320

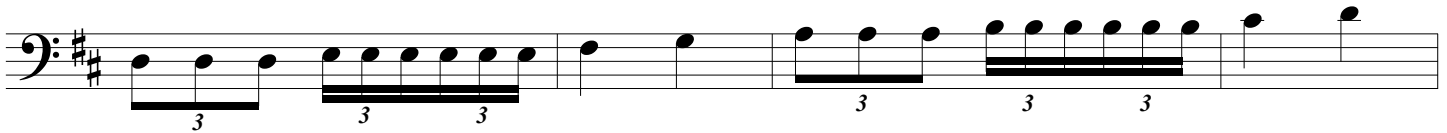
Can be played with Counting in 2 Compound Meter Page 60



321



322



323

First staff of exercise 323, bass clef, key signature of two sharps (F# and C#). It contains six measures: a triplet of eighth notes, a triplet of sixteenth notes, a quarter note, a triplet of eighth notes, a triplet of sixteenth notes, and a quarter note.

Second staff of exercise 323, bass clef, key signature of two sharps. It contains six measures: a triplet of eighth notes, a triplet of sixteenth notes, a quarter note, a triplet of eighth notes, a triplet of sixteenth notes, and a quarter note.

324

First staff of exercise 324, bass clef, key signature of two sharps. It contains six measures: a triplet of eighth notes, a triplet of sixteenth notes, a quarter note, a triplet of eighth notes, a triplet of sixteenth notes, and a quarter note.

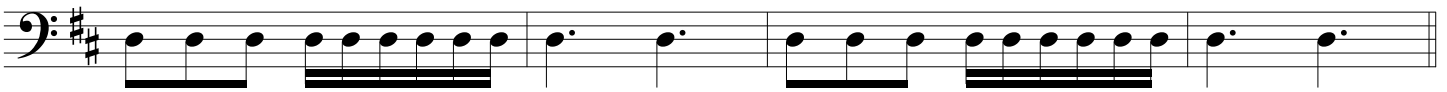
Second staff of exercise 324, bass clef, key signature of two sharps. It contains six measures: a triplet of eighth notes, a triplet of sixteenth notes, a quarter note, a triplet of eighth notes, a triplet of sixteenth notes, and a quarter note.

Compound Meter in 2

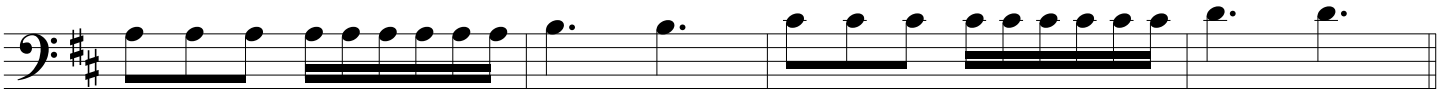
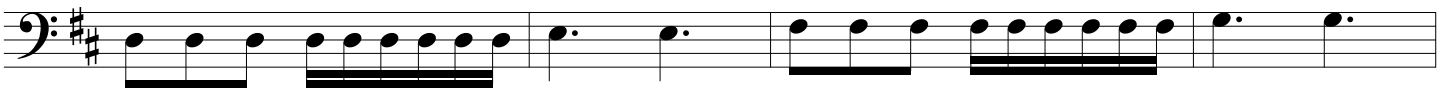
Flash Card 72 & 73

325

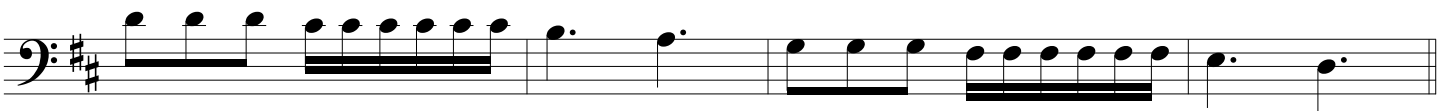
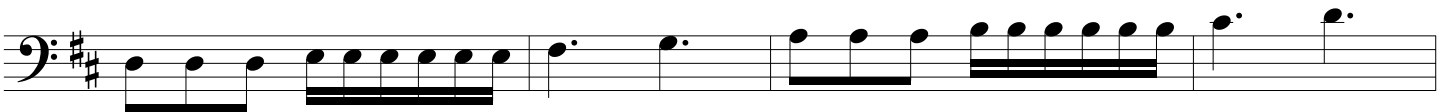
Can be played with Counting in 2 Page 58



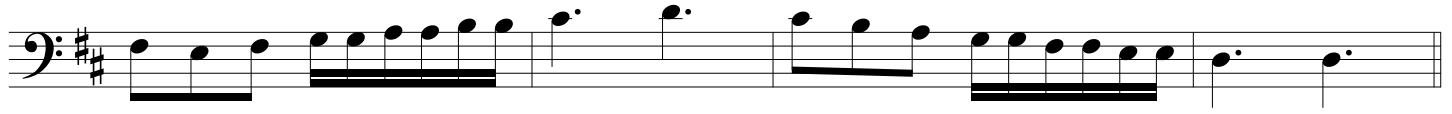
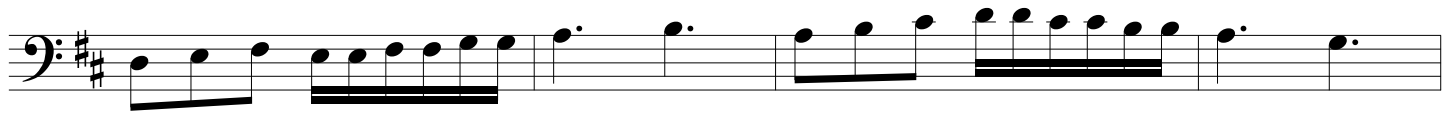
326



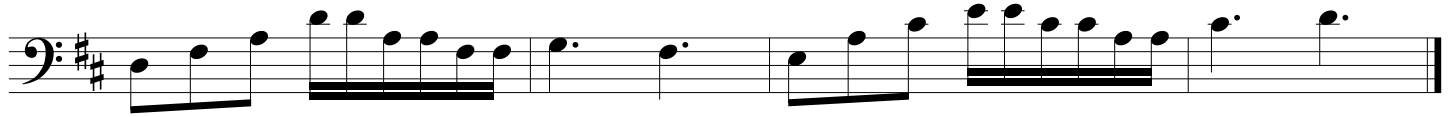
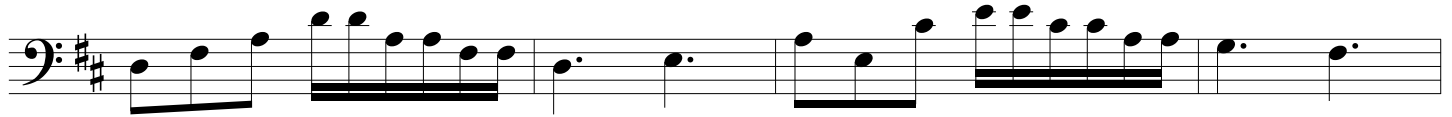
327



328



329



Counting in 3 with Triplets

Flash Card 91, 92 & 97

330

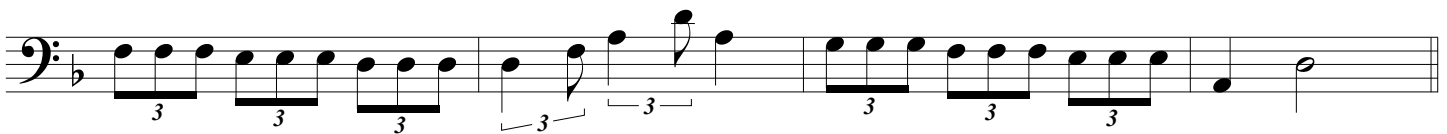
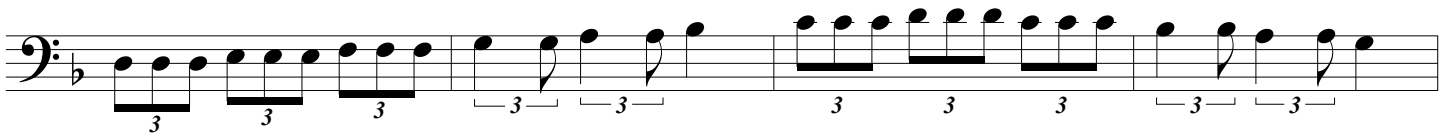
Can be played with Compound Meter in 3 Page 64



331



332



333

Exercise 333 consists of two staves of music in bass clef. The first staff contains four measures: the first three measures feature eighth-note triplets, and the fourth measure contains two eighth-note triplets. The second staff contains four measures: the first three measures feature eighth-note triplets, and the fourth measure contains a quarter note followed by a half note.

334

Exercise 334 consists of two staves of music in bass clef. The first staff contains four measures: the first three measures feature eighth-note triplets with slurs, and the fourth measure contains two eighth-note triplets. The second staff contains four measures: the first three measures feature eighth-note triplets with slurs, and the fourth measure contains a quarter note followed by a half note.

Compound Meter in 3

Flash Card 74, 75 & 76

335

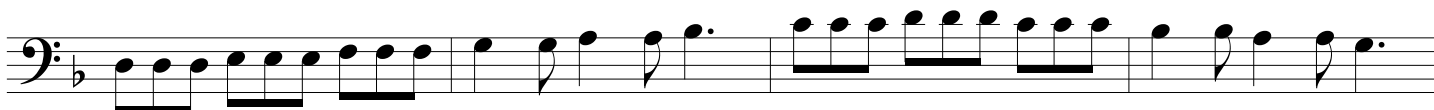
Can be played with Counting in 3 with Triplets Page 62



336



337



338

Exercise 338 consists of two staves of music in bass clef, one below the other. The key signature has one flat (B-flat). The first staff contains four measures: the first measure has a quarter note G2, an eighth note G2, and a quarter note F2; the second measure has a quarter note E2, a quarter note D2, and a quarter note C2; the third measure has a quarter note B1, an eighth note B1, and a quarter note A1; the fourth measure has a quarter note G1, an eighth note G1, and a quarter note F1. The second staff also contains four measures: the first measure has a quarter note E2, an eighth note E2, and a quarter note D2; the second measure has a quarter note C2, a quarter note B1, and a quarter note A1; the third measure has a quarter note G1, an eighth note G1, and a quarter note F1; the fourth measure has a quarter note E1, an eighth note E1, and a quarter note D1.

339

Exercise 339 consists of two staves of music in bass clef, one below the other. The key signature has one flat (B-flat). The first staff contains four measures: the first measure has a quarter note G2, an eighth note G2, and a quarter note F2, all under a slur; the second measure has a quarter note E2, a quarter note D2, and a quarter note C2; the third measure has a quarter note B1, an eighth note B1, and a quarter note A1, all under a slur; the fourth measure has a quarter note G1, an eighth note G1, and a quarter note F1. The second staff also contains four measures: the first measure has a quarter note E2, an eighth note E2, and a quarter note D2, all under a slur; the second measure has a quarter note C2, a quarter note B1, and a quarter note A1; the third measure has a quarter note G1, an eighth note G1, and a quarter note F1, all under a slur; the fourth measure has a quarter note E1, an eighth note E1, and a quarter note D1.

Compound Meter in 4

Flash Card 81-88

Vivaldi's Spring

345



346



347



348



349



350



351



352

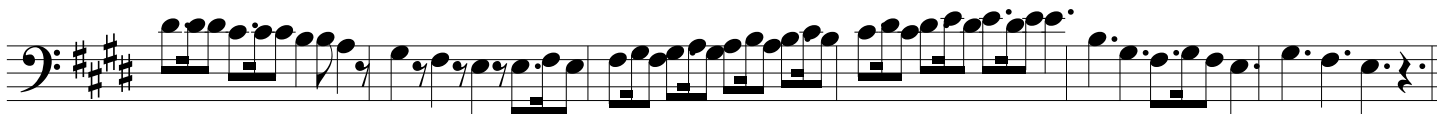


353

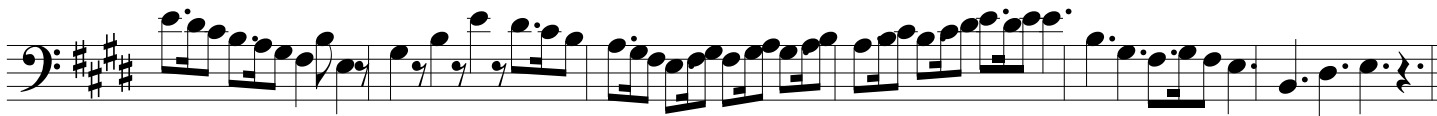


353





354



355

Vivaldi's Spring "Finale"

